

**New York  
State**



**Department of  
Environmental  
Conservation**

Dear Interested Citizen:

This Fact Sheet provides a summary of recent developments related to this site, and announces a Public Meeting on December 13, 2007 from 7:00 – 9:00 PM at the Sondra and David S. Mack Student Center, 200 Hofstra University in Hempstead, NY, at which the information in this Fact Sheet will be discussed.

Project Related Issues:

Project Related Issues:

Mr. Amen Omorogbe, P.E.  
NYSDEC  
Division of Environmental  
Remediation  
625 Broadway  
Albany, NY 12233-7014  
(518) 402-9564

Health-Related Concerns:

Ms. Sharon McLelland  
NYSDOH, BEEI  
Flanigan Square  
547 River St., Room 300  
Troy, NY 12180-2216  
(800) 458-1158 Ext. 27880

KeySpan Representative:

KeySpan's Community Representative for the Site is Lillie Manjarrez. The company's Telephone Hotline for Hempstead and Garden City residents in the vicinity of the site is: (516) 545-6161

**Former Hempstead  
Intersection Street  
Manufactured Gas Plant  
Nassau County, NY  
Site No.: D1-0002-98-11**

# FACT SHEET

November 2007

## KeySpan Starting Interim Remedial Measures at Former Hempstead Manufactured Gas Plant Site; IRM and Soil Vapor Testing to be Discussed at Public Meeting on

### Summary:

KeySpan Corporation (a National Grid Company) is announcing a series of Interim Remedial Measures (IRM) to begin the cleanup of the Hempstead Intersection Street former Manufactured Gas Plant (MGP) site. These measures, including shallow soil removal and recovery of liquid coal tar, are the first phase of a more comprehensive site-wide remedy to be selected in early 2008. The Work Plan for this IRM has been reviewed by the New York State Department of Health (NYSDOH) and the Nassau County Health Dept. (NCDH), and approved by the New York State Department of Environmental Conservation (NYSDEC).

The principal component of the IRM is the excavation of approximately 10,000 cubic yards of coal tar-contaminated soil from several locations in the northern and eastern areas of the site. Contamination in these areas has not penetrated to great depths, and is thus relatively easy to remove by excavation. In most of the IRM area, the excavation will be approximately 8 feet deep; however, there will be some localized areas where there will be deeper excavation to depths of approximately 16 feet. NYSDEC is currently reviewing a Feasibility Study to determine the best method to remediate other areas of the site where there is deeper contamination, and an announcement on this proposed remedy is expected during the first quarter of 2008.

Outside the IRM excavation area, the IRM work plan includes the installation of 24 additional product recovery wells, at both on-site and off-site locations. The purpose of these wells is to recover as much liquid tar from the deeper subsurface as possible, in preparation for the implementation of the comprehensive site-wide remedy. Some of the remediation techniques under consideration for this comprehensive remedy require that liquid tar be removed from the soils to the greatest extent possible. Tar recovery can be a slow process, so early completion of these recovery wells will allow KeySpan to get a head start on implementation of the final remedy, regardless of which remedy is ultimately selected.

### Site Location and History:

The 7.5 acre Hempstead Intersection Street Former MGP site is located along the border between the Villages of Garden City and Hempstead in central Nassau County, New York. Most of the site is located in Garden City. The attached IRM figure shows the site location. An automobile dealership and commercial businesses are located east of the site along Franklin Avenue. Residential properties are located on the north side of Second Street in Garden City. Intersection Street and a parking lot for a medical office building are located immediately south. An inactive Long Island Rail Road (LIRR) right-of-way borders the eastern portion of the site. The Village of Garden City has two currently inactive municipal water supply wells immediately west of the site. The Remedial Investigation included an evaluation of these wells, and it was determined the wells are not impacted by MGP related contaminants.

A large manufactured gas plant (MGP) operated on the site from early 1900's to mid 1950's. This plant used coal and petroleum products to create a flammable gas which was piped into the surrounding communities, where it was used for lighting, heating and cook-

## Document Repositories:

The Interim Remedial Measures Work Plan, the Final RI Report and other documents associated with the Hempstead Intersection Street site are available for review at the document repositories identified below:

Garden City Public Library  
60 7th Street  
Garden City NY 11530

Hempstead Public Library  
115 Nichols Court  
Hempstead NY 11550

Repositories are open during normal library hours.

---

NYSDEC Region 1 Office  
SUNY-Stonybrook  
Stony Brook, NY 11790  
Contact: Mr. Walter Parish  
(631) 444-0241  
Hours: M-F: 9-5  
(by appointment)

---

### Vapor Intrusion Concerns

If you have questions regarding potential health concerns related to the operation of the former MGP site, please contact Sharon McLelland of NYSDOH at (800) 458-1158 Ext. 27880 or by email at: [spr03@health.state.ny.us](mailto:spr03@health.state.ny.us)

ing similar to how natural gas is used today. The gas manufacturing process produced a dark, oily liquid waste known as coal tar, and some of the coal tar escaped into the subsurface from plant related facilities.

## Key Findings of the Remedial Investigation

The Final Remedial Investigation (RI) Report was approved by the NYSDEC, and presented at a Public Meeting on June 28, 2007. Key RI findings include:

1. Contaminants typically associated with gas manufacturing, including BTEX (benzene, toluene, ethylbenzene and xylenes), PAH's (polycyclic aromatic hydrocarbons), and cyanide were found in soils and groundwater beneath the site and in surrounding areas. Most of the contamination is coal tar related from the plant storage tanks and piping.
2. Groundwater, which comes into contact with the tar, can become contaminated with the BTEX and PAH related chemical compounds. A plume of contaminated groundwater containing BTEX and PAHs flows generally south from the site at a depth of approximately 30 feet beneath the ground surface. The Final RI Report describes the dimensions of the plume as approximately 600 feet wide and 3,800 feet long.
3. Other sources of these compounds also exist in the area. However, in terms of overall impact on groundwater quality, the MGP is considered to be a larger source of contamination.
4. The contaminated groundwater plume has not impacted the drinking water supply wells serving the communities, and it should not adversely affect those wells in the future.
5. People on or near the site are not being exposed to hazardous materials under current conditions, largely due to the fact that the contaminants are found underground. However, there are potential exposure pathways (primarily from potential construction related activities) that could develop in the future, which will be addressed by the remediation. A Feasibility Study to evaluate and select the appropriate technology has been submitted to the NYSDEC and is currently under review.

## Interim Remedial Measures

The IRM will start with the drilling of additional soil borings to more precisely define the extent of the IRM excavation areas. The additional tar recovery wells will also be installed as part of this work.

The IRM excavation work will be performed following the completion of the delineation borings and recovery wells. All of the IRM related work will be performed in accordance with a NYSDOH and NYSDEC approved Community Air Monitoring Plan. Excavation and soil handling will be performed under a temporary (tent-like) enclosure with active air controls to prevent odors and contaminated vapors in the work areas from moving into the surrounding area. The temporary enclosure will be relocated to each of the IRM excavation areas as work progresses.

The excavation will be performed using typical construction excavation equipment, and soils will be transported by truck for off-site treatment and disposal in accordance with NYSDEC requirements. All trucks will have protective covers, and will be cleaned before entering public streets. Clean soil will be placed on the site to backfill and restore the excavation areas. After the IRM excavation areas are remediated, these areas will then be used to facilitate the remedial construction work related to the site wide Remedial Action Plan that NYSDEC will be selecting in early 2008.

## Ongoing Soil Vapor Investigation:

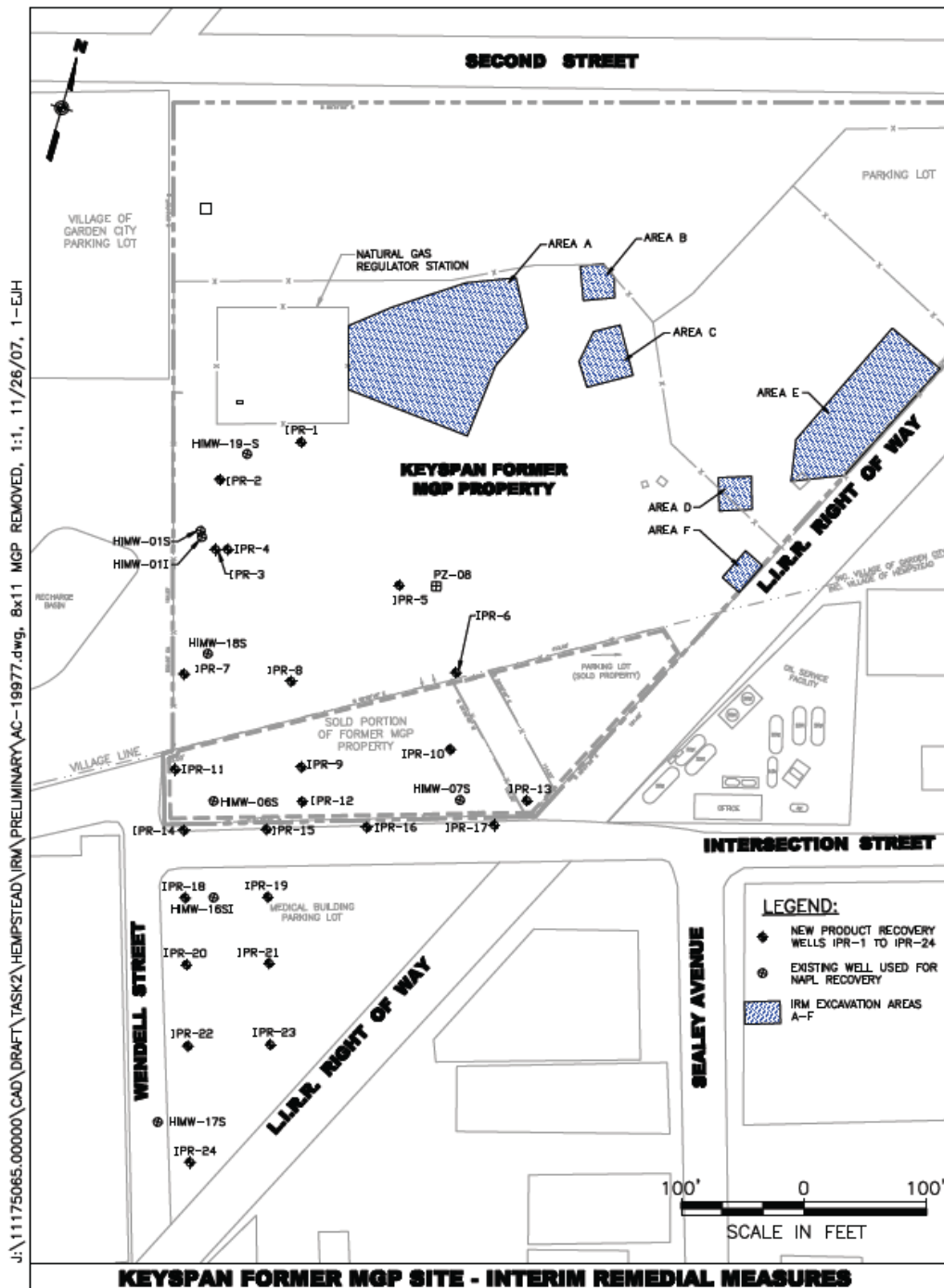
Some of the contaminants present at the MGP site are volatile compounds, and thus have the potential to contaminate soil vapor, which could potentially enter buildings. A sampling program is under way to evaluate this potential exposure pathway. The data collected to date has not shown any MGP related soil vapor intrusion issues. A supplemental soil vapor intrusion program will continue during the upcoming winter heating season, at properties selected by the NYSDOH and NCDH. The results of the sampling conducted to date, and plans for additional air sampling, will be discussed at the public meeting.

## Next Steps:

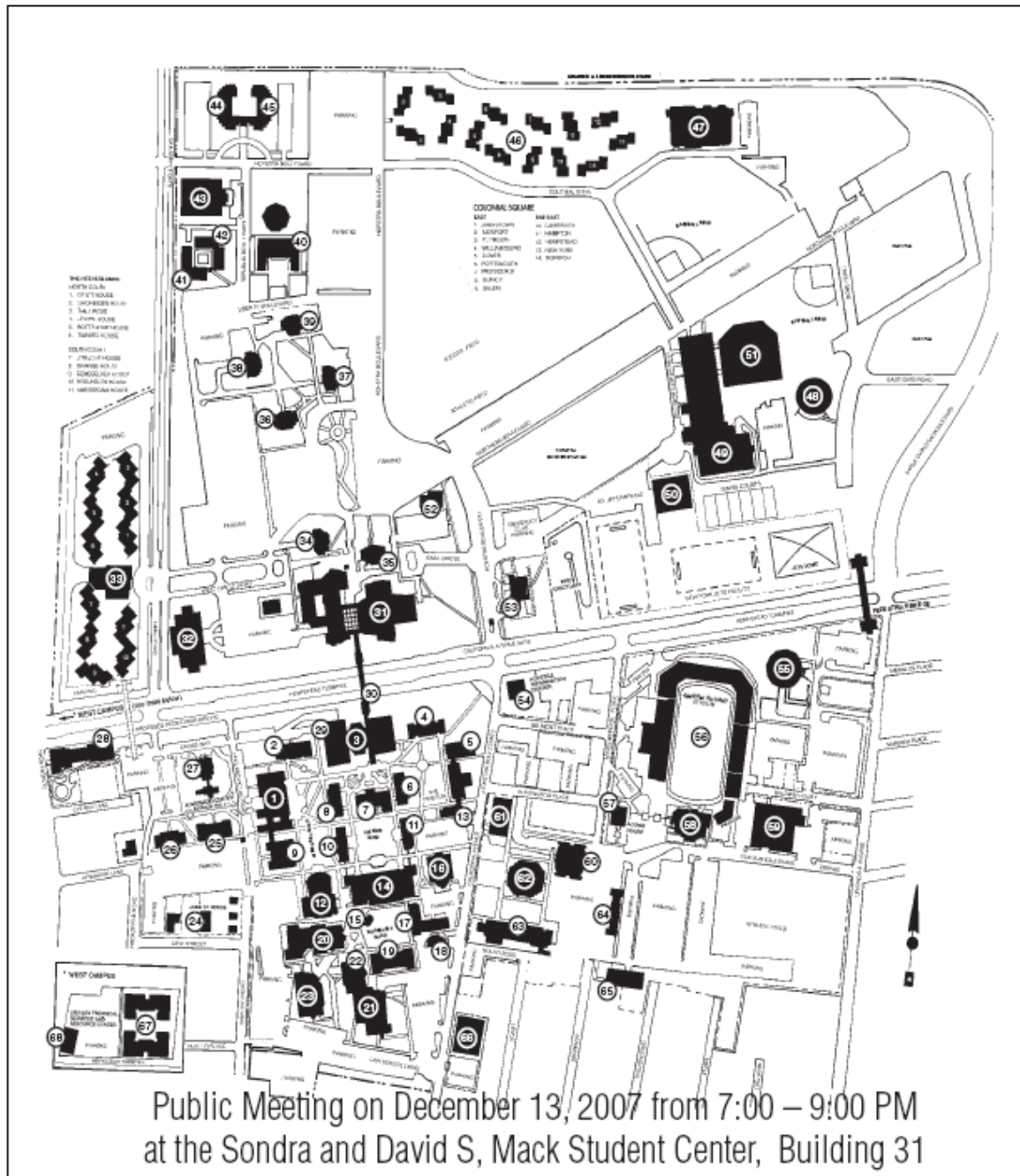
Field work to install the tar recovery wells and delineate the excavation areas is already under way. A competitive bidding process needed to select the remediation contractor has also begun. Once selected, the contractor will prepare other remedial construction documents including the design of the temporary enclosure for the IRM excavations, the associated air handling and treatment system and other project details for review by the NYSDEC and NYSDOH. Following approval of the Feasibility Study, the NYSDEC will propose a Remedial Action Plan in early 2008 to address the entire site. Public comment will be solicited prior to finalizing the Site Remedial Action Plan.

## Public Meeting:

A Public Meeting to present Interim Remedial Measures will be held on December 13, 2007 at 7:00 PM at the Mack Student Center at Hofstra University in Hempstead, NY.



# HOFSTRA UNIVERSITY CAMPUS



Hofstra University is located in Hempstead, Long Island, New York, approximately 25 miles east of Manhattan, less than an hour away by train or automobile.

The Long Island Rail Road (LIRR) has frequent trains from Pennsylvania station in New York City to Hempstead station, a mile and a half from the Hofstra campus.

Hofstra is approximately 30 minutes by car from either John F. Kennedy International Airport or LaGuardia Airport.

By car, travel on the Long Island Expressway, Northern State Parkway or Southern State Parkway to Meadowbrook State Parkway to exit M4 (Hempstead Turnpike); then proceed west on Hempstead Turnpike to the Hofstra campus (approximately one mile).